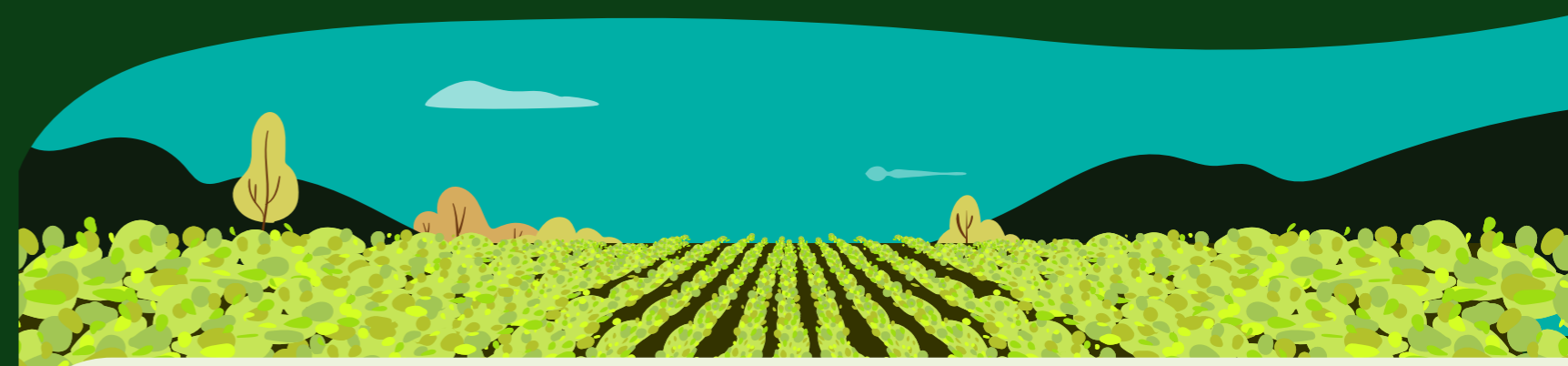




Fundación Alpina: Cultivating Change in Rural Colombia

Established in 2008, Fundación Alpina is far from a typical organization. We are a Social Laboratory aiming to transform life projects and realities of families, communities, and small scale organizations in the rural sector by building and co-creating scalable and replicable initiatives.

These initiatives contribute to the transformation of livelihoods and support the sustainability of local agri-food systems.



We are a corporate foundation

working directly in the territories with communities improving the ecosystem, and providing non-financial support aimed at strengthening capacities. Through rural extension and collective processes, we accelerate smallholder farmers and small-scale agribusinesses so that they can integrate into impact investment ecosystems.

Our value-added approach:

Associativity

Promote self-managed associative models in rural contexts to access markets, strengthen savings capacity, provide financial inclusion, and strengthen social fabric.



Rural Women

Foster economic autonomy that enables empowerment of rural women enhancing their well-being and improving their living conditions. Through affirmative actions, facilitate the recognition and exercise of rights and their decision-making capacity.



Agroecology

Work with smallholder farmers promoting the development of agroecological practices within agri-food systems, through actions that foster environmental awareness and adaptation to climate change. Enhance food security by facilitating timely access to high-nutritional-value foods.



What we do?



Having an impact on the sustainable rural development of the country, so that the results and lessons learned can be scaled up and influence public policies.

Country

Productive

Social Laboratory

Knowledge



Strengthens the capacities of small-holder farmers to develop sustainable agri-food systems.



Producing replicable, transferable and evaluated frameworks for a wide range of stakeholders.

Programs and initiatives

1

Out of 400 agribusinesses

395 require assistance to become sustainable and strengthen their livelihoods...

5 have the potential to transition from incubation to acceleration to integrate into the impact investment ecosystem.

That's why we want to continue working across the entire ecosystem.

2

Program to support incipient associations to navigate the impact ecosystem.

Main achievements:



Income:

We have increased the average income of small-holder farmers by 30%.



Financial inclusion:

Through the creation of +50 self-managed savings and credit groups in rural and indigenous contexts.



Female economic empowerment:

An increase of 26% of women who make decisions together with their partners (regarding land use, productive initiatives and household income expenditures).



Food security:

Families have increased from 1 to 3 daily meals with high-nutritional value food (such as fruits, vegetables, eggs and chickens produced by themselves).



Access to water:

We've increased access to water 24 hours a day in 6 out of 9 communities in La Guajira, allowing the farming activities to be carried out all year round.

We are inspired by the participants life transformations



"Each morning I go to visit my home garden to water the crop (...) now we don't need to buy in the market but we can cook with our vegetables"

Keyla Zambrano
La Guajira



"I have become an entrepreneur because I have my own business (...) now I can manage my own time to share more with my family"

Hilda María García
Cauca

Would you like to learn the story behind it?

Camila Aguilar
Executive Director

camila.aguilar@alpina.com

Martha Lucía de la Cruz
Alliance Coordinator

martha.delacruz@alpina.com



[Fundacionalpina.org](https://fundacionalpina.org)



[@fundacionalpina](https://www.instagram.com/fundacionalpina)



Fundación Alpina